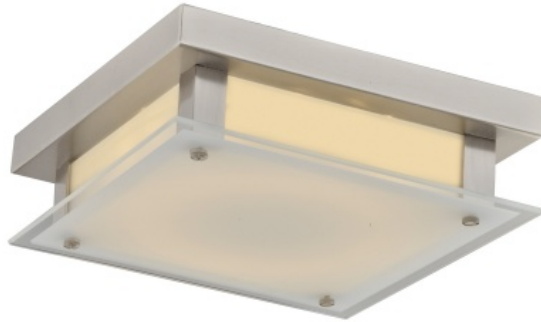


AVE

L I G H T I N G



Item#: HF1103-BN

Inspired by what is considered the greenest street in America, each fixture in the Cermack St. Collection features a long-lasting, integrated, dimmable AC LED board to efficaciously and energy-efficiently illuminate any room.

Brushed Nickel
9.5" x 9.5" x 2.75"H
11W/120V LED 900lm 3000K
Dimmable

RECOMMENDED DIMMER BRAND MODEL NUMBER

LUTRON NOVA NLV-600-WH, MAESTRO MAELV-600-WH,
DIVA DVELV-303P-WH, RADIO RA2 RRD-6ND-WH

LEVITON
VIZIA DECORA CAT-NO.VPE06-1LZ,
ILLUMATECH SLIDE DIMMER IPE04-1LZ,
DECORA DSE06-10Z

COMPANY NAME:
DATE:
PROJECT NAME:
LOCATION:
APPROVED BY:
PRODUCT ITEM CODE: HF1103-BN

AVE

L I G H T I N G